

Penrith Area Junior Schools Chess News

October 2011 Cumbria Chess Association

Schools Chess League makes first move

The first meeting of the Penrith Area Junior Schools Chess League was on Wednesday 19th October at Ullswater Community College. Fifty-two pupils in thirteen teams from eight schools in and around Penrith took part. Some schools had very young teams, including players from years three and four. Others had players new to chess. There were a lot of very close games: some people were lucky and some were not, but everyone took things in a good spirit and seemed to have a good time, which is the most important thing. After the first set of three rounds the League Table looks as follows.

Penrith Area Junior Schools Chess League Table			
School	Points	Games Played	%
Calthwaite B	9	12	75
Temple Sowerby	5.5	8	69
Long Marton A	5	8	63
Calthwaite A	7	12	58
Calthwaite C	6.5	12	54
Hunter Hall	6.5	12	54
Bolton	6	12	50
Long Marton B	6	12	50
Plumpton A	4	8	50
Plumpton B	5.5	12	46
North Lakes A	5	12	42
Lazonby	4	12	33
North Lakes B	2	12	17

Calthwaite B are in first place with a 75% score (9/12). Congratulations to them, but it is very early days yet and there are only a few points separating the vast majority of the teams with ten rounds left to play. It looks like it could be a very close competition.

Penrith Chess 8-18

Penrith Chess 8/18 is a new chess club for young people in the Penrith area.

Everyone Welcome!

We meet at Ullswater Community College (room W76) on Mondays during term time between 3.45 and 7.00 p.m. - drop in at a time that suits you.

For more details contact Kevin Southernwood: tel 01768 896510 or e-mail

kevin.southernwood@yahoo.co.uk

Up and coming events

There are a number of events coming up after Christmas. The second meeting of the League will be in early February. Also in February there will be a number of what are called 'Qualifier Events' for the 2012 Cumbria Junior Chess Championships, which then take place in March (normally in Carlisle).

Your school will be contacted with dates and details in the new year!

Chess for Schools

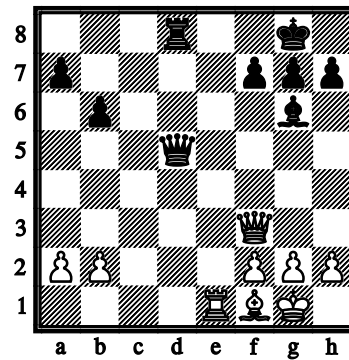
It is quite possible that your school already has a chess club and that either a teacher or a parent volunteer runs it. But then again maybe not everyone is so lucky. Cumbria Chess Association wants to help all junior schools in Cumbria develop chess in a way that helps them and their pupils. We are only a small voluntary group but we may be able to help with advice or information about chess and chess clubs. It is also possible that we can arrange for an experienced chess player to offer some tips and advice at your school on a one-off or irregular basis. If your school is interested contact Kevin Southernwood (Penrith area) or Drew Miller (Carlisle area) . You can e-mail us from school at kevin.southernwood@yahoo.co.uk or thedrew@talktalk.net

Help!

Cumbria Chess Association would like your help in making our newsletters and website really interesting for young readers. So why not tell us about any chess related things that you or your school would like to see. Better still write something for us. Maybe you could tell us what you like or don't like about playing chess or give us your view of a tournament you have played in. Perhaps you have a chess question you want answered? Get in touch via your school and we will see what we can do.

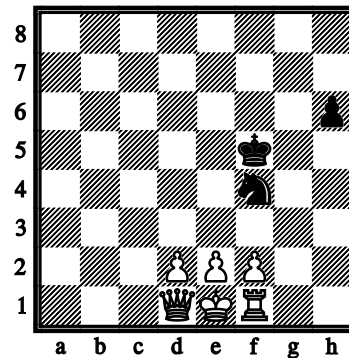
Terrifying Tricky Problems volume 1

A few of us were having trouble working out the answers to these chess problems so we thought we would ask for a bit of help. First of all it is white to move in the position below. What do you think white should play?



White to move and win material, possibly even the game

Too tough or not up to your high standards? Try this one. Things don't look good for the black side here as white has a queen and a rook and pawns against just a knight and a pawn. But in fact black has a killer move. Can you see what it is?



Black to move and win